



Shield Street, SE15 | £500,000

02087029999

[newhomes@pedderproperty.com](mailto:newhomes@pedderproperty.com)

**pedder**  
NEW HOMES



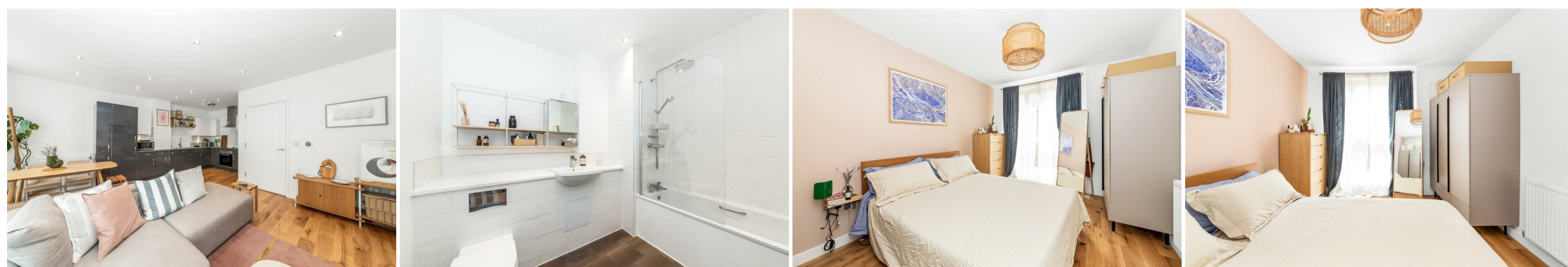


## In General

- 2-bedroom apartment
- Private Garden
- Communal Roof Terrace
- Secure Cycle Storage
- Hardwood Flooring
- Close to Overground, Cycle and Bus Routes
- EPC - B Rating
- Open-plan Kitchen/Living Area
- Built-in Appliances
- Quiet Residential Block

## In Detail

A stylish and well-appointed two-bedroom ground floor apartment with wrap around garden and communal roof terrace

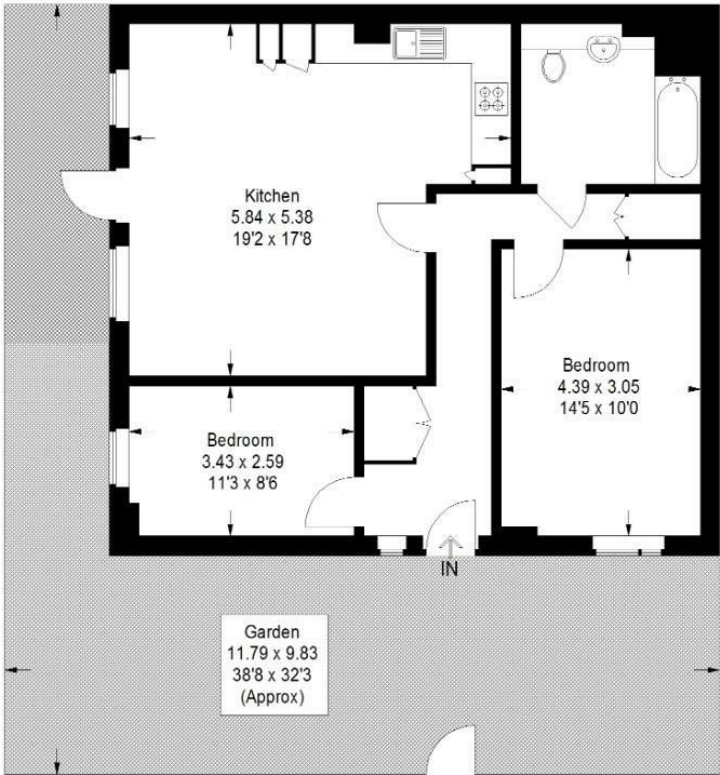




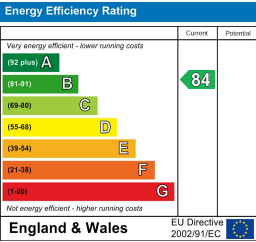
# Floorplan

## Leyland Court, SE15

Approximate Gross Internal Area  
69.0 sq m / 743 sq ft



Copyright www.pedderproperty.com © 2025  
These plans are for representation purposes only as defined by RICS - Code of Measuring Practice. Not drawn to Scale. Windows and door openings are approximate. Please check all dimensions, shapes and compass bearings before making any decisions reliant upon them.



Pedder Property Ltd trading as Pedder for themselves and for the vendor/landlord of this property whose agents they are, give notice that (1) these particulars do not constitute any part of an offer or contract, (2) all statements contained within these particulars are made without responsibility on the part of Pedder or the vendor/landlord, (3) whilst made in good faith, none of the statements contained within these particulars are to be relied upon as a statement of representation or fact, (4) any intending purchaser/tenant must satisfy him/herself by inspection or otherwise as to the correctness of each of the statements contained within these particulars, (5) the vendor/landlord does not make or give either Pedder or any person in their employment any authority to make or give representation or warranty whatsoever in relation to this property.